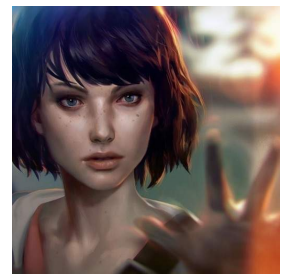


Life Is Strange



****About Life Is Strange****

Life Is Strange is an adventure game that consists of five episodes. As the game progresses, the player must make numerous decisions that will have immediate impact on the present and the future.

The popular and award-winning PC game Life Is Strange can finally be played on a smartphone or tablet. The game consists of five parts. In each episode, you accompany the photography student Max, who has the unique ability to turn back time. Together with her friend Chloe, she tries to understand the tremendous importance of this ability. But Max slowly realizes that each of her decisions has an immediate impact on the present and the future. In the course of the game, in which you investigate the disappearance of a fellow student, you have to make numerous decisions that will influence the rest of the game. So think carefully about how you decide. Any decision can lead to another end ****Life Is Strange - Features:****

- Turn back time: In Life Is Strange, you play the photography student Max, who has a unique and invaluable ability. Max can turn back time. She also uses this ability to rescue her best friend Chloe. But little by little, Max realizes that each of her decisions has a huge impact on the present and the future. When Max and Chloe want to investigate the disappearance of a fellow student, Max realizes that the change of the past can sometimes have devastating effects. In the five episodes of Life Is Strange, you have to make numerous decisions that will influence the rest of the story. Turn back time and discover many secrets.
- Different endings: Since you can make numerous decisions during the game, which means that every player experiences his own story, there are also various possibilities how the game ends. Which end you experience is based on the decisions you made during the game.
- Share your progress: Unlike the original PC game, you can share your progress in the game on social media such as Facebook. You can also compare your choices with the decisions of your friends on these channels.
- Photo mode: With the new photo mode, you can shoot pictures directly in the game. The photo can then be edited with filters and shared on different platforms.

Conclusion: Life Is Strange is a really successful adventure game in which you have direct influence on the course and the end of the game. Above all, the mobile game impresses with first-class graphics and a detailed story.